



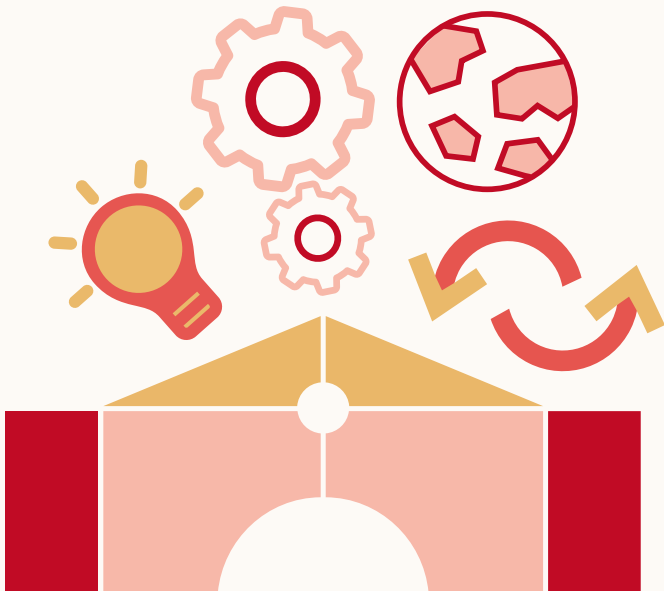
le cnam

Lirsa

Interdisciplinary
Research Center
in Action-Oriented Sciences

Director
Madina Rival

Assistant Director
Stéphanie Chatelain-Ponroy



Lirsa is an interdisciplinary research center with a gateway to the professional world

- 120 researchers
- 80 PhD students, a majority of whom are employed in parallel to their doctoral studies
- 3 research teams
- Working in close collaboration with the Employment and Labor Research Center (CEET)
- Focusing on the dynamics, development and monitoring of public and private organizations, as well as territories in the broadest sense of the term
- Leading the field with transversal, historical and critical perspectives
- An applied research that is regularly disseminated through social media and news networks (Le Monde, Les Échos, Le Figaro, The Conversation, Xerfi Canal, France Culture, BFM Business...)
- A comprehensive range of research methodologies (qualitative, quantitative, action-oriented and documentary research)

Keywords: Organization, Management, Economics, Law, Territorial Development

Our Programs

7 PhD Programs:

- Management Sciences
- Economic Sciences
- Architecture, Urban Planning and Environment
- Law
- Logistics, Transportation, Tourism
- Anthropology and urban transformation
- Art, design and society

Our Research Teams

PO – Management, Control and Organization
Accounting – Management Control – Finance – Law – Human Resource Management

Unifying research axis: links between governance, tools and organizational performance

Poem – Public Policy: Economics and Management

Economics of Public Policy and Labor– Health Economics – Theoretical Economics – Corporate and Market Finance – Public Administration

Unifying research axis: evaluation of public policies and organizations

Spid – Strategy, Futures Studies, Innovation, Development

Futures studies – Innovation – Entrepreneurship – Strategy – International Management – Geography – International Marketing – Urban Planning – Sustainable Development

Unifying research axis: Organizational and territorial development

CEET–Employment and Labor Research Center

A transversal research program directly related to the Lirsa, Lise, and CRTD research centers.

Research at the Cnam

Lirsa, EA 4603, is one of 22 research centers at the Cnam. It belongs to the Abbé-Grégoire Doctoral School (ED 546).

recherche.cnam.fr

Our Research Actions

Research Contracts

Labex Réfi (Financial Regulation) – **Labex Sites** (Science, Technology and Innovation in Society) – **Labex Dynamite** (Territorial and Spatial Dynamics) – **IdEFI Promising** (Education of Innovation in the Human and Social Sciences) – **ANR Alegoria** (Advanced Linking and Exploitation of Digitized Geographic Iconographic Heritage) – **ANR Kinetic** (Knowledge Integration under Time Constraint) – **ANR GfK** (Game for Knowledge) – **Ingrid-2** (Poverty and Life and Work Conditions) – **Beyond 4.0** (Impact of the New Technologies on the Future of Jobs, Business Models and Welfare) – **PRex** (Improving healthcare access in nursing home) – **TelmEx** (Improving healthcare pathways for PIMD children)...

Organization of Thematic and Interdisciplinary Seminars

- Doctoral
- Research
- International

Actions to Disseminate Scientific and Technical Culture

Conferences, symposiums, research and study days, MOOC, MT180, Fnege Médias...

Our Expertise and Methodologies

Qualitative, Quantitative, Action-Oriented and Documentary Research Methodologies, such as: textual analysis, archival analysis, historical analysis, comparative analysis, interview techniques, observation, ethnography, case studies, impact assessment, questionnaire-based surveys, simulations, econometrics, modeling, scenarios...

Our Partnerships and Collaborations

With Companies and Institutions

Unicef – Orange – EDF – Allianz – Groupama – Météo-France – French Organization of Craftsmen and Artisans – Liberté Living-Lab – French Ministry of Labour – French Ministry of Economy and Finance – *Pôle emploi* (French Employment Center) – French Higher Council of the Order of Chartered Accountants – French Council of Economic Analysis – French Constitutional Council – French Regional Health Agency – National Solidarity Fund for Autonomy – *Caisse des dépôts* Group (Deposits and Consignments Fund) – Council of Europe – International Association of Francophonie Mayors – International Organization of La Francophonie...

With Academic and Corporate Research Centers

École polytechnique – *Institut Louis Bachelier* – *Assistance publique - Hôpitaux de Paris and PSE* - Paris School of Economics (*Hospinnomics* – *Hospital - Innovation-Economics*) – Orange Labs – GIS-IRESP (Public Health Research Institute) – European Commission (H2020 FinTech New financial technologies) – *École nationale d'administration publique* (Canada)...

With International Universities

Shanghai University of International Business and Economics (China) – Bentley University (United States) – The University of Chicago (United States) – Stanford University (United States) – Benedictine University (United States) – *HEC Montréal* (Canada) – *IHEC Carthage* (Tunisia) – University of Warwick (United Kingdom) – University of Strathclyde Glasgow (United Kingdom) – UCLouvain (Belgium)...

Find out more

Lirsa - Cnam
Case 1LAB30
40 rue des Jeûneurs
75002 Paris

lirsa@cnam.fr

lirsa-en.cnam.fr
lirsa.cnam.fr

<https://hal-cnam.archives-ouvertes.fr/LIRSA-CNAM>

