



le cnam

# Lirsa

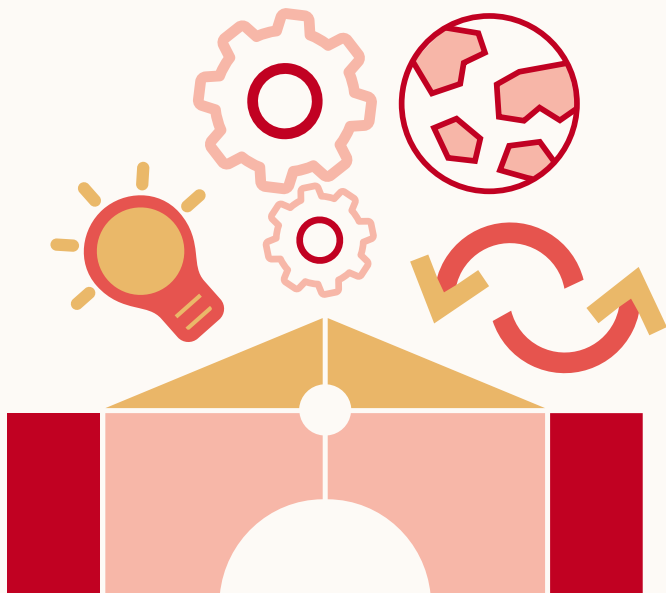
## Interdisciplinary Research Center in Action-Oriented Sciences

**Director**

Madina Rival

**Assistant Director**

Stéphanie Chatelain-Ponroy



## Lirsa is an interdisciplinary research center with a gateway to the professional world

- 120 researchers
- 80 PhD students, a majority of whom are employed in parallel to their doctoral studies
- 3 research teams
- Working in close collaboration with the Employment and Labor Research Center (CEET)
- Focusing on the dynamics, development and monitoring of public and private organizations, as well as territories in the broadest sense of the term
- Leading the field with transversal, historical and critical perspectives
- An applied research that is regularly disseminated through social media and news networks (Le Monde, Les Échos, Le Figaro, The Conversation, Xerfi Canal, France Culture, BFM Business...)
- A comprehensive range of research methodologies (qualitative, quantitative, action-oriented and documentary research)

**Keywords:** Organization, Management, Economics, Law, Territorial Development

### Our Programs

#### 7 PhD Programs:

- Management Sciences
- Economic Sciences
- Architecture, Urban Planning and Environment
- Law
- Logistics, Transportation, Tourism
- Anthropology and urban transformation
- Art, design and society

## Our Research Teams

**PO – Management, Control and Organization**  
Accounting – Management Control – Finance – Law – Human Resource Management

**Unifying research axis:** links between governance, tools and organizational performance

**Poem – Public Policy, Economics and Markets**  
Economics of Public Policy and Labor– Health Economics – Theoretical Economics – Corporate and Market Finance – Public Administration

**Unifying research axis:** evaluation of public policies and organizations

**Spid – Strategy, Futures Studies, Innovation, Development**

Futures studies – Innovation – Entrepreneurship – Strategy – International Management – Geography – International Marketing – Urban Planning – Sustainable Development

**Unifying research axis:** Organizational and territorial development

**CEET–Employment and Labor Research Center**

A transversal research program directly related to the Lirsa, Lise, and CRTD research centers.

## Research at the Cnam

Lirsa, EA 4603, is one of 22 research centers at the Cnam. It belongs to the Abbé-Grégoire Doctoral School (ED 546).

[recherche.cnam.fr](http://recherche.cnam.fr)

## Our Research Actions

### Research Contracts

**Labex Réfi** (Financial Regulation) – **Labex Sites** (Science, Technology and Innovation in Society) – **Labex Dynamite** (Territorial and Spatial Dynamics) – **IdEFI Promising** (Education of Innovation in the Human and Social Sciences) – **ANR Alegoria** (Advanced Linking and Exploitation of Digitized Geographic Iconographic Heritage) – **ANR Kinetic** (Knowledge Integration under Time Constraint) – **ANR GfK** (Game for Knowledge) – **Ingrid-2** (Poverty and Life and Work Conditions) – **Beyond 4.0** (Impact of the New Technologies on the Future of Jobs, Business Models and Welfare) – **PRex** (Improving healthcare access in nursing home) – **TelmEx** (Improving healthcare pathways for PIMD children)...

### Organization of Thematic and Interdisciplinary Seminars

- Doctoral
- Research
- International

### Actions to Disseminate Scientific and Technical Culture

Conferences, symposiums, research and study days, MOOC, MT180, Fnege Médias...

### Our Expertise and Methodologies

Qualitative, Quantitative, Action-Oriented and Documentary Research Methodologies, such as: textual analysis, archival analysis, historical analysis, comparative analysis, interview techniques, observation, ethnography, case studies, impact assessment, questionnaire-based surveys, simulations, econometrics, modeling, scenarios...

## Our Partnerships and Collaborations

### With Companies and Institutions

Unicef – Orange – EDF – Allianz – Groupama – Météo-France – French Organization of Craftsmen and Artisans – Liberté Living-Lab – French Ministry of Labour – French Ministry of Economy and Finance – *Pôle emploi* (French Employment Center) – French Higher Council of the Order of Chartered Accountants – French Council of Economic Analysis – French Constitutional Council – French Regional Health Agency – National Solidarity Fund for Autonomy – *Caisse des dépôts* Group (Deposits and Consignments Fund) – Council of Europe – International Association of Francophonie Mayors – International Organization of La Francophonie...

### With Academic and Corporate Research Centers

*École polytechnique* – *Institut Louis Bachelier* – *Assistance publique - Hôpitaux de Paris* and *PSE* - Paris School of Economics (*Hospinnomics* – *Hospital - Innovation-Economics*) – Orange Labs – GIS-IRESP (Public Health Research Institute) – European Commission (H2020 FinTech New financial technologies) – *École nationale d'administration publique* (Canada)...

### With International Universities

Shanghai University of International Business and Economics (China) – Bentley University (United States) – The University of Chicago (United States) – Stanford University (United States) – Benedictine University (United States) – *HEC Montréal* (Canada) – *IHEC Carthage* (Tunisia) – University of Warwick (United Kingdom) – University of Strathclyde Glasgow (United Kingdom) – UCLouvain (Belgium)...

## Find out more

Lirsa - Cnam  
Case 1LAB30  
40 rue des Jeûneurs  
75002 Paris

[lirsa@cnam.fr](mailto:lirsa@cnam.fr)

[lirsa-en.cnam.fr](https://lirsa-en.cnam.fr)  
[lirsa.cnam.fr](https://lirsa.cnam.fr)

<https://hal-cnam.archives-ouvertes.fr/LIRSA-CNAM>

